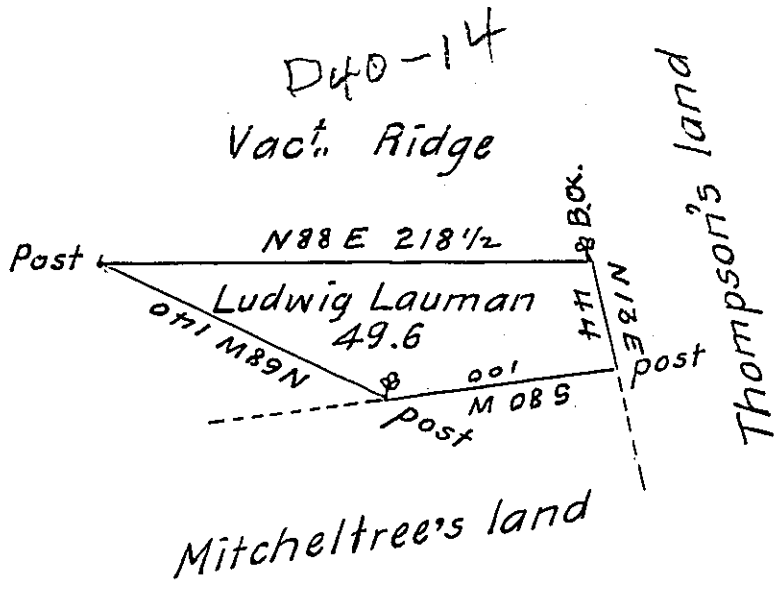


Courses & Distances

S 13 E 44
 S 80 W 100
 N 68 W 140
 N 88 E 218 1/2



The Draught of a tract of land Situate in Fermanaugh
 Township Cumberland County containing forty nine acres & Six
 tenths of an acre & the Usual allowance of Six per Cent for roads
 &c. Surveyed for Ludwig Lauman August the 2^d. 1785 In Pursuance
 of a Warrant from the Honorable the Proprietaries Dated at Philad^a.
 April the 25th 1774 ~

Ja^s. Harris D.S.

John Lukens Esq^r. Surv^r. Gen^l.

IN TESTIMONY that the above is a copy of the original remaining on file in
 the Department of Internal Affairs of Pennsylvania, made
 conformably to an Act of Assembly approved the 16th day of
 February, 1833, I have hereunto set my Hand and caused
 the Seal of said Department to be affixed at Harrisburg,
 this Ninth day of October 1905

Hoac R. Smith
 Secretary of Internal Affairs.